

a monthly newsletter from
the Pennsylvania Child Welfare Resource Center



COUNTY CONNECTION



September 2022

Bridge Update

Submitted by: Kari Giles

Coming Soon to Bridge

- When a trainee's certification is approved, the default date of certification will be the current date by which it is approved by the agency. In addition, the agency will also have the ability to update it to the last day of the completed workshop/online component within that certification track
- For instructors only: In the registration screen, there will be a new radio button visible to instructors called “View My Workshops”. When an instructor selects this option, they will only see workshops they have instructed or will instruct within the specified start and end date.
- The “Active Status” dropdown will be removed from the “Add New User” screen
- The workshop ID will now be visible for all users to view via the personal and event availability views of the calendar
- The “back” button will retain previous screen’s information in the following areas: Workshop registration, calendar, and instructor training history screens

Other News

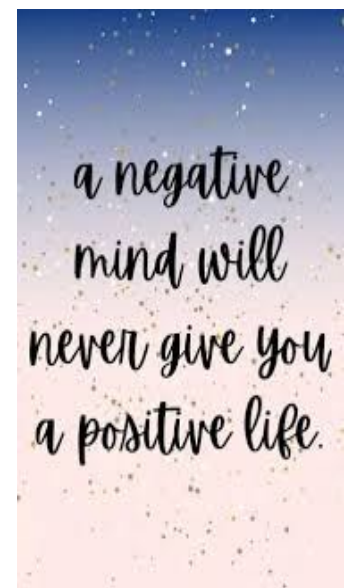
- The Bridge INA Project is currently in sprint 4 of 6 and is estimated to be completed in late fall of 2022.

Reminders

- For anyone who would like to set up a one-on-one Bridge training via Microsoft Teams, please contact cwtpreg@pitt.edu. This training can be for new liaisons or for anyone who may need a refresher. We would also love to hear any feedback, suggestions, and ideas you may have about Bridge via our online form at <http://forms.cwrc.pitt.edu/BridgeFeedback/>. If you have any technical issues or questions, please email the Bridge team at BridgeHD@pitt.edu.

Inside this Issue:

<i>Bridge Update</i>	1
<i>Youth Retreat</i>	2
<i>CWRC Training Updates</i>	3
<i>Regional Team Contact Information</i>	4



Youth Retreat

Submitted by: Cindy Gore

This was my first year attending the retreat, participating in the retreat steering committee, and being a youth leader. I've always appreciated the opportunity to have my voice heard along with meeting new people and learning new skills. I was given a chance to do all of these things by going to the retreat, speaking up and sharing ideas during steering committee meetings, and by being a leader for my peers at the retreat.

The retreat steering committee is the group of youth and staff who plan the retreat. From the logo colors to the activities we participate in throughout the week, it's all youth-driven with support from staff. The committee is comprised of youth and staff from different counties across Pennsylvania who met throughout the year to discuss and share ideas on how to make the retreat unforgettable and an experience that is beneficial for all youth. I personally loved all the participation and passion for an event like this. I also had a couple of personal growth moments as I learned who I was as a team member and a leader. Overall, I loved being a member of the steering committee and really hope to participate again in the future.

The older youth retreat is for youth ages 16 to 20 who are currently in or were formerly in foster care. This is a great opportunity for the youth to grow in different areas as a person and skill-wise. I had a great time meeting new people, networking for my small business, and learning how to crochet. As a youth leader I had a great time working with other youth as a team and my peer group won the retreat field games and scavenger hunt! I also shed a few tears listening to our keynote speaker, A'ric Jackson. It was truly a life changing experience to hear his experiences and how he overcame them. I can't wait to start his book, *51 Secrets to Becoming an Extraordinary Leader*, which all youth at the retreat received!

I plan to go on to school for child development and education and minor in social justice. I loved getting hands-on experience with younger youth and watching them break out of their shells and grow. I took away so much from the retreat and learned things about myself. I am looking forward to attending next year!

-Aurianna Moore



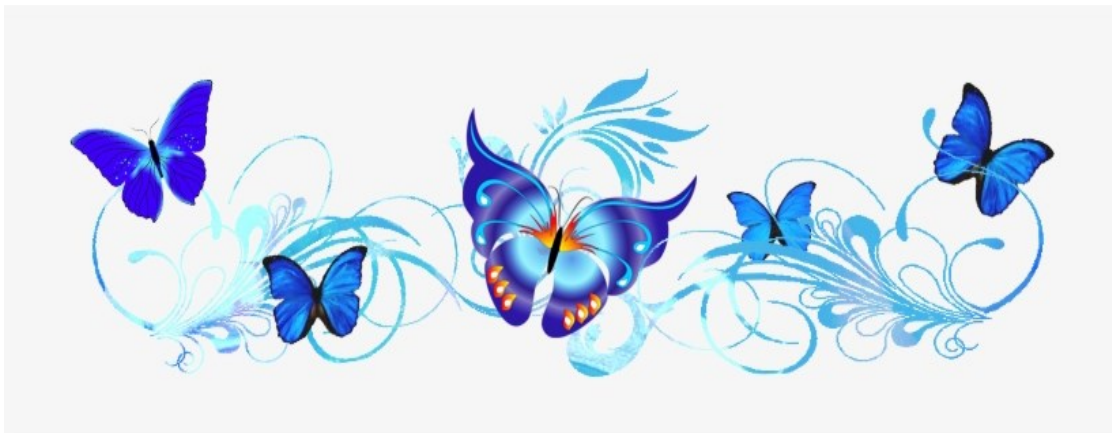
CWRC Training Updates

Submitted by: Veronica King

The October-December 2022 training calendar has been distributed.

Please keep in mind the following:

- **Participants must come with a fully charged laptop and/or tablet to participate in training (a phone is not sufficient for training purposes). Limited amounts of handouts are provided.**
- **We have been experiencing a high number of no-shows to our trainings. Over the course of 4 months, there were 4,152 registered participants that attended and 951 no shows. If your staff are unable to attend a training that they are registered for, please cancel them or have the participant cancel their registration. This will allow others an opportunity to take that spot.**
- **SAM Inc is back! The CWRC will again be working with SAM Inc to deliver regional caseworker safety trainings starting in October! Be on the lookout for more information as to scheduled dates and locations.**
- **Participants must notify CWRC if they test positive for COVID-19 after attending an in-person CWRC training. Please complete the form [CWRC Covid Reporting](#) as soon as possible, including after hours, for EMERGENCY notification because, for example, day 2 of a training could be occurring the next day.**
- **Please visit our website for any COVID protocol updates <https://www.pacwrc.pitt.edu/covid-19.html>**
- **Always check our [CWRC Home Page](#) for our latest training news and event updates for any changes or cancelations. Follow us on Facebook and Twitter to get the latest and greatest!**



Regional Team Contact Information

Our local number is 717-795-9048

Our fax number is 717-795-8013

Registration and winter weather number 1-877-297-7488

Central	
Nick Ranney , <i>Regional Team Supervisor</i>	ner20@pitt.edu
Mackenzie Seiler , <i>Practice Improvement Specialist</i>	mas739@pitt.edu
Christina Fatzinger , <i>Practice Improvement Specialist</i>	cmf27@pitt.edu
Emily Patterson , <i>Practice Improvement Specialist</i>	emily.patterson@pitt.edu
David Vactor , <i>Practice Improvement Specialist</i>	djv20@pitt.edu
Mike Danner , <i>Resource Specialist</i>	mjd12@pitt.edu
Northeast	
Jody Price , <i>Regional Team Supervisor</i>	jlp78@pitt.edu
Elyse Coldren-Baker , <i>Practice Improvement Specialist</i>	elc195@pitt.edu
Jill Ferrero , <i>Practice Improvement Specialist</i>	jab462@pitt.edu
Jayne Toczylousky , <i>Practice Improvement Specialist</i>	jat115@pitt.edu
Maricar Williams , <i>Resource Specialist</i>	man86@pitt.edu
Southeast	
Russell Cripps , <i>Regional Team Supervisor</i>	ruc17@pitt.edu
Angela Plantz , <i>Practice Improvement Specialist</i>	anp202@pitt.edu
Colleen Cox , <i>Practice Improvement Specialist</i>	coc31@pitt.edu
Eliza White , <i>Practice Improvement Specialist</i>	eaw81@pitt.edu
Jessica Wittman , <i>Resource Specialist</i>	jms137@pitt.edu
Western	
Tammie Weaver , <i>Regional Team Supervisor</i>	tmw89@pitt.edu
Adam Garrity , <i>Practice Improvement Specialist</i>	adg105@pitt.edu
Michael McClure , <i>Practice Improvement Specialist</i>	mjm298@pitt.edu
Jennifer Caruso , <i>Practice Improvement Specialist</i>	jcar@pitt.edu
Cassie Kreckel , <i>Practice Improvement Specialist</i>	cek83@pitt.edu
Veronica King , <i>Resource Specialist</i>	vek21@pitt.edu

